

SPECIFICATIONS

| ITEM | SIZE |
|--------|------|
| Feet | 22' |
| Meters | 6.7 |

SLEEPING ACCOMMODATIONS

Number of People Four adults / 1 child

AUTOMOTIVE

| | |
|--|------------|
| Chassis | Ford/Chevy |
| Gasoline Engine Fuel-Injected (liters) | 6 L |
| 5Spd Overdrive Transmission | YES |
| Automatic Transmission | YES |
| Factory Cruise Control | YES |
| Power Steering & Brakes | YES |
| Factory Cab Air | YES |
| Factory Roof Air-Ducted | YES |
| Large Exterior Storage Bay | YES |

ELECTRICAL

| | |
|-----------------------|-----|
| Generator | YES |
| Auxiliary Battery | YES |
| AM/FM Radio with CD | YES |
| 12V Interior Lighting | YES |

INTERIOR

| | in. | cm. |
|--------|-----|-----|
| Height | 83 | 211 |
| Width | 92 | 234 |

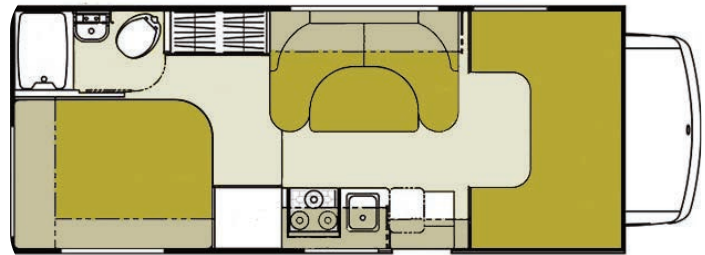
KITCHEN & BATHROOM FEATURES

| | |
|---------------------|-----|
| Wash Basin | YES |
| Shower | YES |
| Toilet | YES |
| Water Heater | YES |
| Heater & Thermostat | YES |
| Kitchen Sink | YES |
| Range (Stove) | YES |
| Microwave | YES |
| Refrigerator | YES |

TANK CAPACITIES

| | gal. | ltr. |
|-------------------------|------|------|
| Water Heater | 6 | 22 |
| Fresh Water | 50 | 189 |
| Gray Water Tank | 25 | 95 |
| Black Water Tank | 22 | 83 |
| Propane Tank - (in lbs) | 68 | 257 |
| Gasoline Tanks | 55 | 208 |

MOTORHOME C22



BED SIZE

| | in. | cm. |
|------------------|-----|-----|
| Cab-over | | |
| • length | 95 | 241 |
| • width | 57 | 145 |
| • clearance | 25 | 64 |
| Dinette | | |
| • length | 76 | 193 |
| • width | 48 | 122 |
| Permanent | | |
| • length | 80 | 203 |
| • width | 60 | 152 |

The above drawing and floorplan are examples only. Sleeping capacities do not mean like number of adults or full size teenagers can be accommodated comfortably. The features, bed sizes, and amenities listed are representative and may be changed, added or deleted without notice. The numerical vehicle lengths are approximate. Specific floor plans or models will vary and cannot be reserved or guaranteed.